

A Pattern for a Sensor Node

Anupama Sahu, Eduardo B. Fernandez, Mihaela Cardei, and Michael VanHilst
Department of Computer and Electrical Engineering and Computer Science
Florida Atlantic University, Boca Raton, FL 33431
asahu1@fau.edu, ed@cse.fau.edu, mihaela@cse.fau.edu,

Abstract

Sensors are widely used in everyday life including household appliances, fire alarms, traffic control systems, battlefields, banks, and museums. Sensors are used either as standalone devices or in networks. Understanding the basic structure of a sensor node is essential to be able to use the sensors in different types of devices and different kinds of environments. Many applications require different types of sensor nodes that communicate with each other to perform a specific function. We use patterns to present an abstract view of the structure and architecture of a sensor node. Knowing the structure of the node would help the application designer to choose from different types of sensor nodes for his application. The basic sensor node model also helps the designer to reuse, combine, or modify the architecture of a node to suit more complex needs.

1. Introduction

A *sensor* is a device that measures a physical quantity, e.g. light, temperature, or pressure, and converts it into a signal which can be read by a human or by an instrument. Sensors are typically small, self-contained, battery-powered, low cost devices. A *sensor node* is a node in a sensor network able to perform some processing, gathering sensory information, and communicating with other connected nodes in the network [wik]. Today, sensors and sensor nodes, perform many activities in our society with potential applications in military, civilian, and medical application. In the military and industrial domain, sensor nodes are used in robotic landmine detection, battlefield surveillance, target tracking, environmental monitoring, wildfire detection, air-traffic control, industrial automation, and traffic regulation. In medical applications, sensor nodes can be deployed to monitor patients and to assist disabled patients. Sensor nodes also play an important role in other systems such as Supervisory, Control, and Data Acquisition (SCADA) systems, as well as in crisis and emergency response systems such as Responding to Crises and Unexpected Events (RESCUE) [Meh04].

Usually sensor nodes are not used individually, but are part of a larger and more complex system. In order to monitor a system, a group of sensors is deployed, sometimes even millions or billions [Sutter10]. Sensor nodes have communication capabilities (usually wireless) that allow them to send the collected data to users or other processors. Sensor nodes are the building blocks and the most important component of such a system, therefore a sensor node pattern can be useful in designing sensor-based systems and in the design of the corresponding network structures. This pattern is the first of a series of patterns for wireless sensor networks.

2. The Sensor Node Pattern

Aka: Mote, Sensing Node.

Intent

This pattern describes the architecture of a Sensor Node, a unit intended to sense, store, and communicate local information about a physical environment.

Example

Consider a chemical plant where crude oil is processed and refined into more useful petroleum products. In this system the pipes can burst due to excessive pressure. The pipes also may have high temperatures that may lead to fires. The plant has already had some accidents. If this situation continues, the chemical plant could incur huge losses. It would also endanger the lives of its employees.

Context

There are physical environments that need to be monitored for the presence of living beings, recording physical attributes, or detecting abnormal conditions. These environments could be inside buildings or could be external environments. For example, a battlefield may be monitored for detecting the presence of enemy soldiers and tanks, a wildlife sanctuary may be monitored for recording the population of migratory birds, and industrial plants can be monitored for detecting fire accidents [Cho03]. This pattern can be used to describe the nodes used in those environments or in similar situations, either as standalone units or as parts of a network.

Problem

Important events may get missed if nobody is watching for them. For example, in the battlefield, an attack by the enemy can take an army by surprise; in a wildlife sanctuary the population of migratory birds may be reduced due to a change in an environmental factor to which we did not respond; fires in homes, industrial plants and offices can lead to loss of lives and property. Without a way to sense some attributes of the physical environment these situations can go undetected for so long that effective countermeasures can no longer be taken. Human monitoring is not a convenient or efficient alternative.

A possible solution to this problem is constrained by the forces defined below, which have been grouped into related aspects.

Forces about the functions of the device:

- **Functionality:** The device should be able to sense and collect local information about its surrounding environment such as temperature, pressure, light, smoke, humidity, or sound.

- **Controllability:** If required, the device should have the ability to support actuators such as switches, servos, and motors that would allow it to control various actions [Bos09].
- **Extensibility:** The architecture of the device should be extensible so that new functions can be added if required. For example, some nodes may need human-readable displays.

Forces about the use of the information collected:

- **Storage:** The device should have sufficient memory in order to store the collected data. It should also be able to perform simple computations and transmit only the required data and routing information if the device is part of a network.
- **Conversion:** The information detected by the sensors should be converted to appropriate formats for storage and processing.
- **Communication:** The device should be able to communicate (send and receive) with other devices in order to gather or forward information about the physical environment.

Forces about the use of the devices:

- **Power autonomy:** The device should have its own source of power.

Solution

Place a collection of one or more sensing devices together with other components in a common container to collect, store, process, and transmit sensor information. The sensor node may also contain some optional components that provide more specialized functions. A sensor node can act both as a data collector and as a data router. A sensor node can have different types of sensors that can detect pressure, humidity, light, acoustic, temperature, and various other physical properties. A sensor node includes some basic components that are organized as shown in the block diagram of Figure 1 [wik]:

- The *processor* is responsible for managing and coordinating various activities of the sensor node and for processing data. The *sensors* measure some properties of the physical environment. The *Analog-to-Digital Converter (ADC)* converts the analog data measured by the sensors to digital format so that it can be stored and processed.
- The *transceiver* is a radio device that can receive and transmit information. If the node is part of a network, data can be transmitted from the source to the destination using single hop or multiple hops communication.
- The *power source* supplies power to the sensors and to the other components of the sensor node. The power source may be supported by power scavenging units such as solar cells [Aky02].
- The processor also stores the collected data in the *memory* until it is forwarded to the next node.

- The processor generates control messages that direct the sensor to start or stop collecting information about the environment and direct the transceiver to be either in the receiving mode or transmitting mode depending upon the scenario.
- When the node is part of a network, the processor also keeps information about its neighboring nodes, decides the routing path and communicates the routing information to the other nodes.

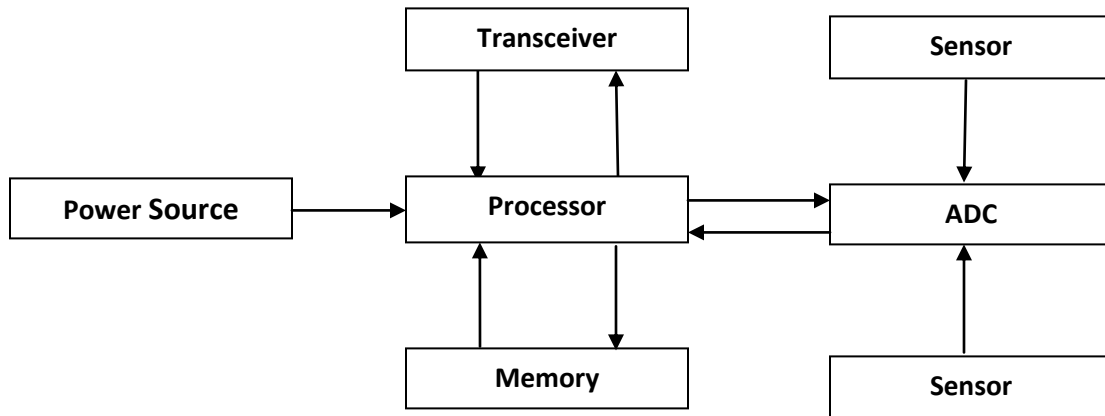


Figure1. Block diagram of a sensor node

Structure

Figure 2 shows the **PowerSource** supplying power to the **Sensor**, **ADC**, **Processor**, **Memory**, and **Transceiver** according to the block diagram of Figure 1. This class diagram is a precise description of the physical and information aspects of the device.

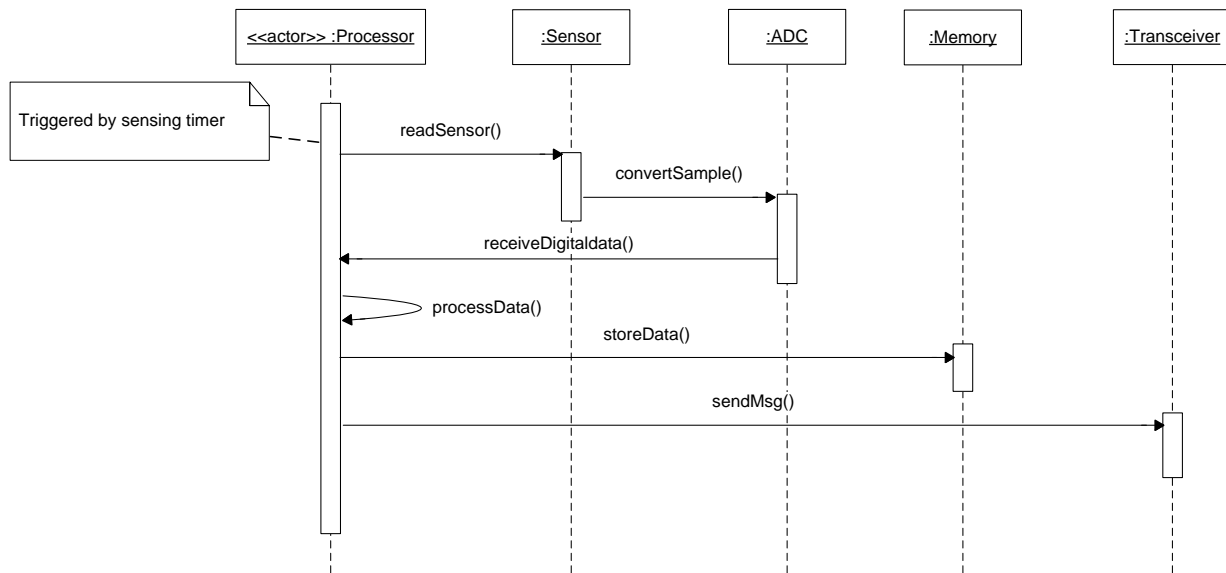


Figure3. Sequence Diagram for Sense, Collect and Transmit Data

Known Uses

- Berkeley Motes like MPR400 manufactured by Crossbow Technologies [Ber10]. Some of its specifications are:
 - Frequency range of 902-928 MHz and T1 CC1000 transceiver
 - ATmega 128L processor
 - 4K bytes of memory
 - Light, humidity, and temperature sensors
- IPsensor Node manufactured by Arch Rock [Ips10]. Some of its specifications are:
 - TelosB-compatible, 2.4 GHz IEEE 802.15.4 low-power radio
 - T1 MSP 430 processor
 - 10K bytes of memory and 12 bit ADC
 - Temperature, humidity, and total solar radiation sensors
- Squidbee Mote manufactured by Libelium[Squ10]. Some of its specifications are:
 - Frequency range of 2.4 GHz
 - ATmega8 processor
 - 8K bytes of memory
 - Light, humidity ,and temperature sensors

Implementation

Users can buy commercially manufactured sensor nodes from the market based upon what kind of sensors they want for their application. These nodes are either pre-programmed and start collecting information once they are installed or they can be programmed depending on the application characteristics. Sensor nodes are configured to transmit their data using a transceiver. Data can be transmitted to the user directly or using a network [Int00], [Hei00].

Implementation of a sensor node involves two main steps: hardware implementation and software implementation. Hardware implementation depends on the characteristics of the application, expected performance, etc. The designer has to select the hardware components (see Figure 1) and the interconnections (e.g. buses), to meet the application requirements. These components are laid out on a circuit board in order to promote extensibility. Depending on the application requirements and circuit parameters, the power budget must be determined, and an appropriate power source selected. Several sensor platforms are available on the market and they can be customized to different applications, for example Crossbow sensor nodes [Ber10].

The software implementation involves operating system and application code (firmware). The operating system manages the system resources and access to them, and is designed to be application independent to promote reusability. The operating system usually contains services for data message transmission and reception using the radio transceiver. The application code implements behaviors specific to the sensing application. Off-the-shelf sensing platforms come with the operating system and a software development kit for applications. The kit also provides a mechanism for uploading the application firmware on the sensor node program memory. For example, Crossbow nodes come with TinyOS operating system and the nesC programming language and tools.

Aspects that are important in the use of sensor nodes are:

- **Ruggedness:** The device should be able to operate in harsh environmental conditions.
- **Autonomy:** The device should be able to operate autonomously and unattended.
- **Dimensions:** The device should be small in size so that it can be easily deployed in large numbers [Bos09].
- **Cost:** The device should have a relatively low cost if it needs to be used in large quantities.

Example resolved

Sensor nodes were installed in the pipes of the chemical plant. The sensor nodes constantly monitor and report if there is an abnormal increase of pressure and temperature in the pipes or in the chemical processing units. The sensor nodes can also activate water sprinklers in case of a fire. It is now possible to minimize the bursting of oil pipes and fire accidents in the refinery. This implies that the personnel are also safer.

Consequences

The Sensor Node pattern has the following advantages:

- **Functionality:** This solution performs the required functions of sensing and collecting local information.
- **Controllability:** This device can control actuators.
- **Extensibility:** It is possible to easily add new functions

- **Autonomy:** This device has its own processor, memory and power supply and can operate on its own.
- **Communication:** This device can communicate with other devices for the purpose of gathering and forwarding information in the network.
- **Storage:** This device can store the collected data.

The Sensor Node pattern has the following disadvantages:

- Because of their size and cost, they have limited resources in terms of processor performance, radio reach, memory capacity, and battery life.
- Sensor nodes are usually unattended so they can be physically tampered or destroyed.
- Their use can potentially affect the privacy of individuals and their deployment must take this possibility into consideration.

Variants

Apart from the basic components, the sensor node might also have some additional application-specific components. For example, a sensor node can have a location-finding system or GPS to keep a track of its location and of its neighbors. The sensor node can have a mobilizer which can help the sensor node to move short distances if required, or it can have a power generator which supplies continuous power to a node having some additional functionality [Aky02]. Some of the sensors may have human-readable displays to facilitate data reading. Another important variant is a secure node, able to withstand some intentional attacks.

Related Patterns

A pattern for sensor network architectures that can be built using the Sensor Node pattern as a unit is presented in [Car10]. The Sensor Node pattern is also used as a component in the SCADA pattern [Fer10].

3. Conclusions

We have presented a pattern that describes the architecture of a sensor node. This pattern is part of a set of patterns that we are developing for wireless sensors networks and their applications.

In particular, in this paper we studied the various components of a sensor node, including its static and dynamic aspects. We also discussed the advantages and constraints of a sensor node and its implementation details required to use sensor nodes for an application.

Acknowledgements

We thank our shepherd Robert Hanmer for his careful comments that significantly improved this paper.

References

- [Aky02] I. A. Akyildiz et. al., “A Survey on Sensor Networks”, IEEE Communications Magazine, Aug. 2002.
- [Bos09] R. Bose, “Sensor Networks- Motes, Smart Spaces, and Beyond” Proc. IEEE, 2009.
- [Car10] Mihaela Cardei, Eduardo B. Fernandez, and Anupama Sahu, “A pattern for Sensor Network Architecture”, submitted for publication.
- [Cho03] C. -Y. Chong, and S.P. Kumar, "Sensor networks: Evolution, opportunities, and challenges," Proc. IEEE, Aug. 2003.
- [Fer10] E.B.Fernandez and M.M. Larrondo-Petrie, "Designing secure SCADA systems using security patterns", *Procs. of the 43rd Hawaii Conf. on Systems Science*, Honolulu, Jan.2010, 1-8. <http://ieeexplore.ieee.org/stamp/stamp.jsp?tp=&arnumber=5428672>
- [Hei00] W. R. Heinzelman, A. Chandrakasan, and H. Balakrishnan, “Energy-Efficient Communication Protocol for Wireless Microsensor Networks,” IEEE Proc. Hawaii Int’l. Conf. Sys. Sci., Jan. 2000, pp. 1–10.
- [Int00] C. Intanagonwiwat, R. Govindan, and D. Estrin, “Directed Diffusion: A Scalable and Robust Communication Paradigm for Sensor Networks,” Proc. ACM MobiCom’00, Boston, MA, 2000, pp. 56–67.
- [Meh04] S. Mehrotra et al., “Project RESCUE: Challenges in Responding to the Unexpected,” SPIE J. Electronic Imaging, Displays, and Medical Imaging, 5304, SPIE, 2004, pp. 179–192.
- [Ber10] Berkeley Motes data sheet online at http://www.xbow.com/Support/Support_pdf_files/Product_Feature_Reference_Chart.pdf last accessed on March 28, 2010.
- [Ips10] IP Sensor node data sheet online at http://www.archrock.com/downloads/datasheet/IPsensor_Node_DS.pdf last accessed on March 28, 2010.
- [Squ10] Squidbee Mote data sheet online at <http://www.libelium.com/squidbee/upload/c/c1/SquidBeeDataSheet.pdf> last accessed on March 28, 2010.
- [Sutter10] J. D. Sutter, “‘Smart Dust’ Aims to Monitor Everything”, CNN Labs, 2010, <http://www.cnn.com/2010/TECH/innovation/05/25/smart.dust.sensors/index.html?iref=allsearch>, last accessed on July 15, 2010.
- [wik] Sensor node, Wikipedia, http://en.wikipedia.org/wiki/Sensor_node Last accessed on August 17, 2010.

